



# Adonai Elegant

Live the Elegant Life

# Elegant

## Residences 2BHK

Adonai Elegant redefines apartment living by blending modern design with timeless elegance. These spacious 2BHK flats are crafted to offer a perfect balance of comfort and luxury, catering to families and professionals alike. Located in a prime neighborhood.

Adonai Elegant boasts state-of-the-art amenities including a fully-equipped gym, landscaped gardens and a dedicated children's play area. With excellent connectivity, top schools, shopping centers and health-care facilities nearby, Adonai Elegant ensures that you live in the heart of convenience without compromising on the tranquility of home.

6  
Floors

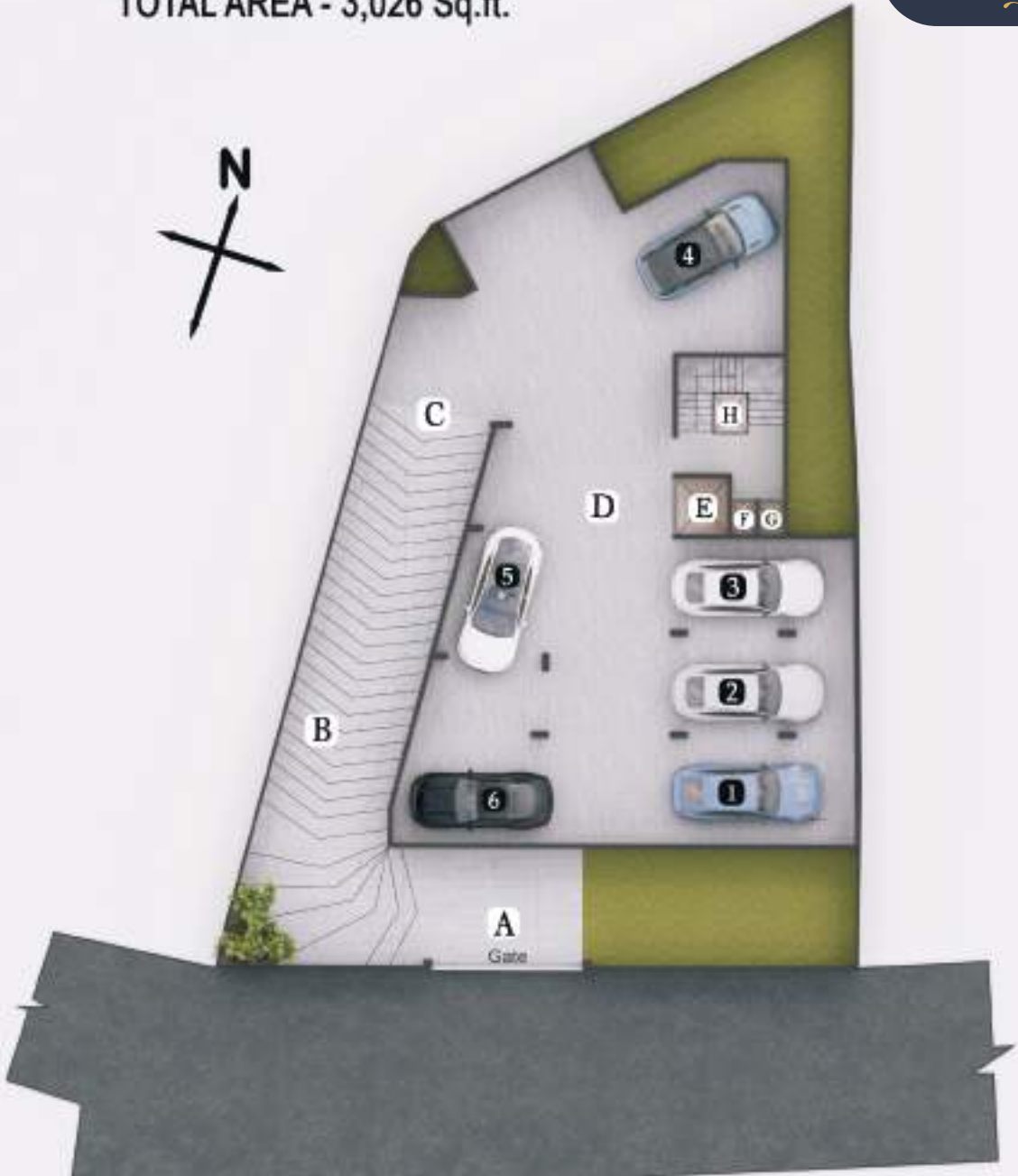
12  
Flats





# PARKING & SERVICES

BASEMENT FLOOR  
TOTAL AREA - 3,026 Sq.ft.



## HIGHLIGHTS

- 1. Covered car parkings with comfortable driveway
- 2. Elevator facility

## LEGENDS

- A** ENRTY / RAMP DOWN
- B** RAMP DRIVEWAY
- C** RAMP UP
- D** DRIVEWAY
- E** ELEVATOR 165 x 185
- F & G** DUCT 75 x 100
- H** FIRE STAIR 350 x 385
- 1 to 6** COVERED CAR PARKING

Dimensions in Cm

### Disclaimer

- 1. Dimensions may vary during construction
- 2. Furniture, fixtures & flooring shown are indicative only

# LOBBY & PARKING

GROUND FLOOR  
TOTAL AREA - 2,778 Sq.ft.



## HIGHLIGHTS

1. Covered car parkings with comfortable driveway
2. Neatly furnished lobby with differently abled toilet

## LEGENDS

- A** ENRTY / RAMP DOWN
- B** RAMP DRIVEWAY
- C** DRIVEWAY
- D** DIFFERENTLY ABLED RAMP
- E** MAIN LOBBY                    275 X 422
- F** DISABLED TOILET            188 X 178
- G** FIRE STAIR                    350 X 385
- H** ELEVATOR                    165 X 185

- I** MAIN STAIR            376 X 300
- J & K** DUCT            75 x 100
- 1 to 6** COVERED CAR PARKING

*Dimensions in Cm*

### Disclaimer

1. Dimensions may vary during construction
2. Furniture, fixtures & flooring shown are indicative only

# TYPICAL FLOOR PLAN

FIRST TO FOURTH FLOOR  
TOTAL AREA - 2,982 Sq.ft.

Adonai  
Elegant



## HIGHLIGHTS

1. 3 Numbers of 2 BHK per floor
2. Lift which can accommodate 6 passengers
3. Vasthu compliant

## LEGENDS

<b>A</b>	APARTMENT UNIT 1	2BHK
<b>B</b>	APARTMENT UNIT 2	2BHK
<b>C</b>	APARTMENT UNIT 3	2BHK
<b>1</b>	MAIN STAIR	275 X 422
<b>2</b>	LIFT LOBBY	220 X 669
<b>3</b>	ELEVATOR	165 X 185
<b>4</b>	FIRE STAIR	350 X 385
<b>5 &amp; 6</b>	DUCT	75 x 100

Dimensions in Cm

### Disclaimer

1. Dimensions may vary during construction
2. Furniture, fixtures & flooring shown are indicative only

# APARTMENT UNIT 1

2 BHK - First to Fourth Floor  
SALEABLE AREA - 1,025 Sq.ft.

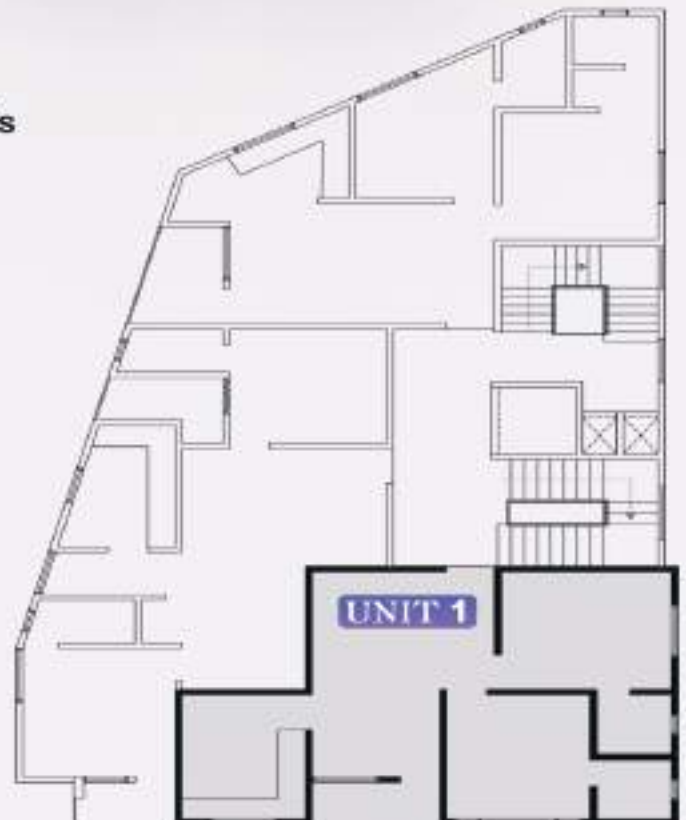


## HIGHLIGHTS

1. 2 BHK flat
2. Two Bed rooms with two Attached Toilets
3. Drawing cum Dining
4. Common Balcony
5. Covered car parkings with comfortable driveway

## LEGENDS

①	LIVING / DINING	408 X 578
②	KITCHEN	275 X 350
③	BALCONY	280 X 120
④	BED ROOM 1	320 X 350
⑤	TOILET 1	165 X 166
⑥	BED ROOM 2	380 X 330
⑦	TOILET 2	165 X 166



Adonai  
Elegant

Dimensions in Cm

### Disclaimer

1. Dimensions may vary during construction

2. Furniture, fixtures & flooring shown are indicative only



# APARTMENT UNIT 2

2 BHK - First to Fourth Floor  
 SALEABLE AREA - 1,148 Sq.ft.



## LEGENDS

①	LIVING	458 X 330
②	BED ROOM 1	350 X 320
③	TOILET 1	220 X 120
④	BALCONY 1	271 X 120
⑤	KITCHEN	218 X 343
⑥	DINING	275 X 348
⑦	BED ROOM 2	340 X 360
⑧	TOILET 2	230 X 120
⑨	BALCONY 2	228 X 120

## HIGHLIGHTS

1. 2 BHK flat
2. Two Bed rooms with two Attached Toilets
3. Independent Living Area Dining Area
4. Two Independent Balcony Space
5. Covered car parkings with comfortable driveway

Dimensions in Cm

### Disclaimer

1. Dimensions may vary during construction
2. Furniture, fixtures & flooring shown are indicative only



# APARTMENT UNIT 3

2 BHK - First to Fourth Floor  
SALEABLE AREA - 1,017 Sq.ft.



## HIGHLIGHTS

1. 2 BHK flat
2. Two Bed rooms with two Attached Toilets
3. Drawing cum Dining
4. Common Balcony
5. Covered car parkings with comfortable driveway

## LEGENDS

1	LIVING / DINING	593 X 340
2	BED ROOM 1	350 X 355
3	DRESS	190 X 105
4	TOILET 1	190 X 136
5	BED ROOM 2	310 X 348
6	TOILET 2	142 X 222
7	KITCHEN	385 X 203
8	BALCONY	180 X 275



Dimensions in Cm

### Disclaimer

1. Dimensions may vary during construction
2. Furniture, fixtures & flooring shown are indicative only





APARTMENT UNIT 1 - LIVING ROOM



APARTMENT UNIT 2 - LIVING ROOM



APARTMENT UNIT 3 - LIVING ROOM

### 1. Structure:-

RCC framed structure with concrete block masonry.

### 2. Flooring:-

2' x 2' Vitrified tiles for living, dining, Bedroom  
Anti-skid Ceramic tiles in Kitchen and Balcony

### 3. Windows:-

UPVC windows with glazed shutters

### 4. Doors:-

Main Door : Super Quality Hard wood frame and shutter with melamine finish  
Internal Doors : Hard wood frames with moulded shutters  
FRP Door for Toilets

### 5. Electrical:-

Modular switches of reputed make  
Branded ELCB and MCB with independent KSEB meter  
Good Quality concealed copper wiring  
Washing Machine point  
Provision for fixing AC in all bedrooms.

### 6. Paint:-

Painting (internal walls): Premium emulsion roller finished paint with cheerful colours that add colour to your lifestyle.  
Painting (internal roof): Premium emulsion in white colour.  
Painting (External):- Good quality weather – shielded paints keep your investment looking as good as new. (Asian or equivalent brands)

# Elegant

## Specifications

---

### 7. Toilet:-

EWC wall hang with concealed cistern in all toilets  
C.P. fitting and sanitary ware – Hindware / Cera / Equivalent Brands  
Provision for geyser and Exhaust fan in toilets  
Glazed Ceramic tiles for Dadoing up to 7feet height  
Anti-skid ceramic tile for flooring

### 8. Kitchen:-

Granite top & single bowl with drain board sink.  
Glazed tiles above the counter to a height of 2 feet  
Provision for Chimney in Kitchen  
Provision for Water purifier

### 9. Generator:-

Generator back up for elevator, common lighting, water Pumps & apartment through limiter switch (1 KV)

### 10. Elevator:-

Lifts of reputed make

### 11. Water Supply:-

Bore well water supply / Provision for Municipal water supply



# Amenities

Adonai Elegant offers a range of modern amenities designed for a comfortable and secure lifestyle. With power backup in both common areas and flats, a health club for fitness, and robust security provisions including CCTV surveillance, residents can enjoy peace of mind. The building features a lift for easy access, an incinerator for waste management, and a dedicated children's play area for family-friendly living. Covered car parking ensures vehicle safety, while a beautifully landscaped garden provides a serene space to unwind.



## Power backup in Common Area & Flats

Uninterrupted power supply for both your home and common



## Children's Play Area:

A fun and safe space for kids to play and explore.



## Health Club

Stay fit and active with our fully-equipped health club.



## Covered Car Parking:

Secure, sheltered parking for your vehicles.



## Security Provision:

Round-the-clock security with advanced safety features.



## Landscaped Garden

Enjoy the serenity of our beautifully designed garden.



## High speed lift

Easy access to all floors with our high-speed lift.



## CCTV

24/7 CCTV surveillance for enhanced safety and peace of mind.



## Incinerator

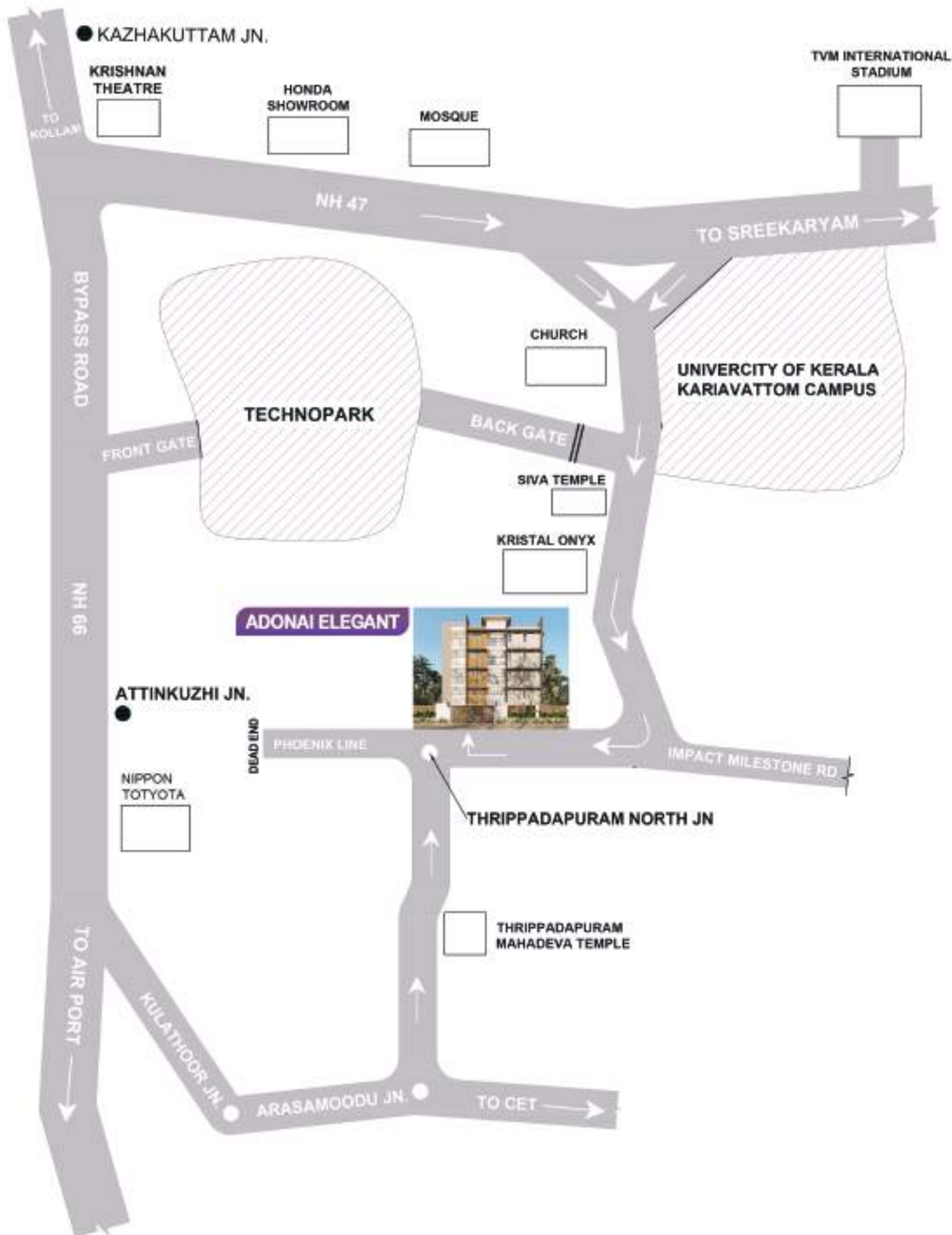
Eco-friendly waste management with a built-in incinerator.



# Location Highlights

Adonai Elegant is perfectly situated in a prime location that offers both convenience and connectivity. Just 800 meters from the Techno Park Back Gate, it's ideal for IT professionals, with major hubs like UST and Infosys only 2.5 km away. Educational institutions such as the University of Kerala Campus (1.5 km) and CET (3.5 km) are within easy reach, along with top-tier schools like The School of Good Shepherd (5 km). Residents can enjoy proximity to key amenities like Lulu Mall (4.5 km), Kochuveli Railway Station (7 km), KIMS Hospital (7 km), and Trivandrum International Airport (9 km), making Adonai Elegant a well-connected and desirable place to call home.

- |   |   |    |   |
|---|---|----|---|
| 1 | Techno Park Back Gate<br><b>800Mtrs</b>           | 7  | The School of Good Shepherd<br><b>5 Kms</b> |
| 2 | Green Field International Stadium<br><b>2 Kms</b> | 8  | Kochuveli Railway Station<br><b>5 Kms</b>   |
| 3 | University of Kerala Campus<br><b>1.5Kms</b>      | 9  | KIMS<br><b>7 Kms</b>                        |
| 4 | UST & Infosys<br><b>2.5 Kms</b>                   | 10 | Medical College<br><b>8 Kms</b>             |
| 5 | CET<br><b>3.5 Kms</b>                             | 11 | Airport<br><b>9 Kms</b>                     |
| 6 | Lulu Mall<br><b>4.5 Kms</b>                       |    |   |



A Project by



Adonai Realtors Co.

**BRANCH OFFICE:**

TC 79 / 2148(5), EANCHAKAL JUNCTION, NH 66,  
VALLAKKADAVU P.O., THIRUVANATHAPURAM –  
695008

**REGISTERED OFFICE**

# 325, SOBHA COMPLEX, 3RD MAIN, VALMIKI  
MAIN ROAD, KAMMANAHALLI,  
BANGALORE - 560084

**Web :** [www.adonaishelters.com](http://www.adonaishelters.com)

**Mail :** [adonairealtorsco@gmail.com](mailto:adonairealtorsco@gmail.com)

**Mail :** [info@adonaishelters.com](mailto:info@adonaishelters.com)

**Contact No. :** 9567557771 / 9847033484

Elegant

